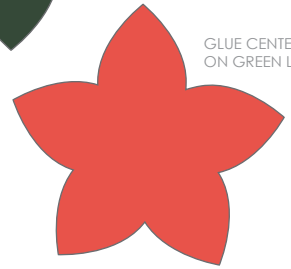


# HOLIDAY PILLOW BOX WITH POINSETTIA EMBELLISHMENT

PRINT OUT ON HEAVY CARD STOCK



GLUE ONTO RED FLOWER



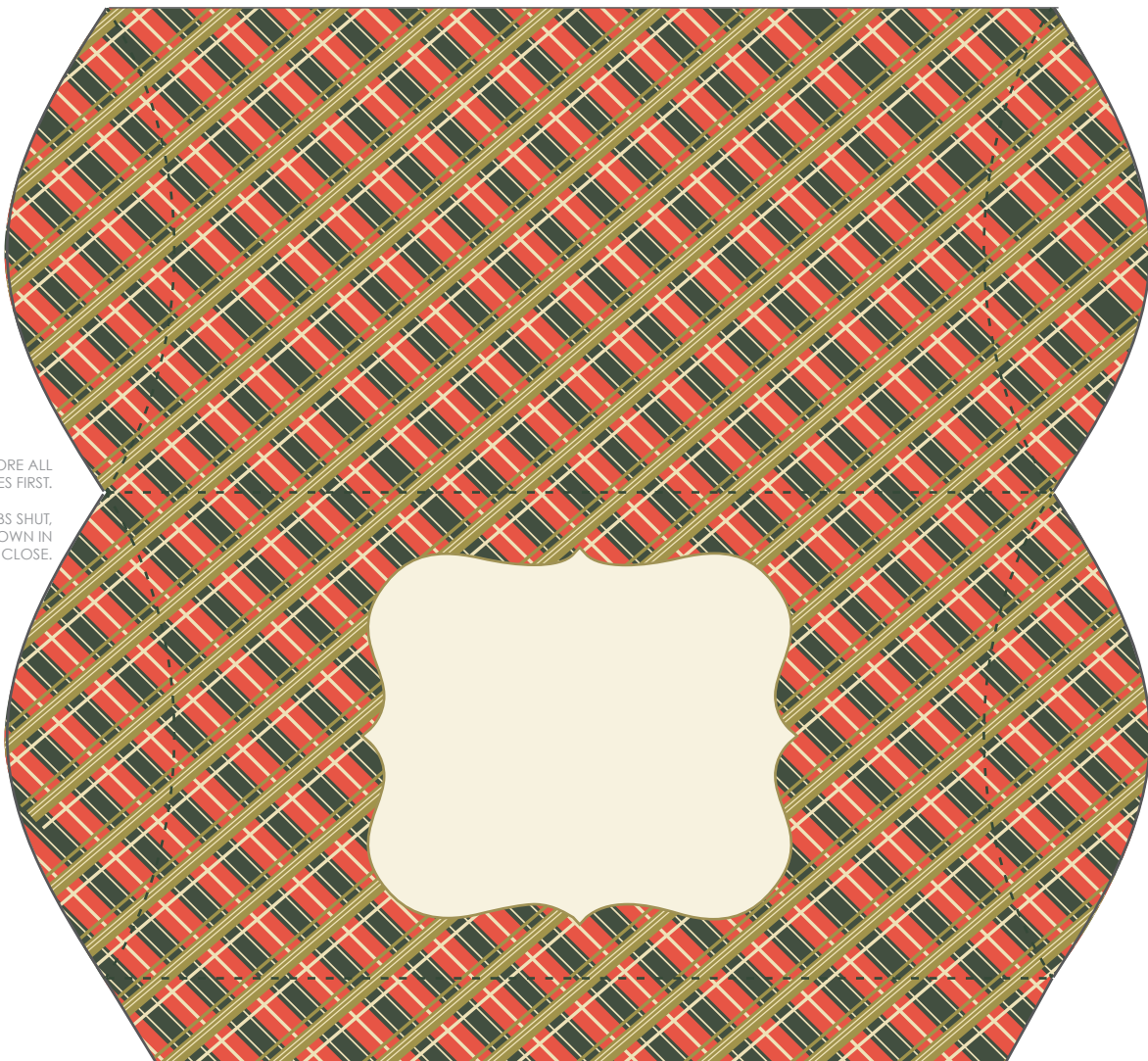
GLUE CENTER DOWN  
ON GREEN LEAVES

1. FOLD OVER FIRST.

MAKE SURE TO SCORE ALL  
DASHED LINES FIRST.

AFTER GLUEING TABS SHUT,  
FOLD FLAPS DOWN IN  
ORDER (1-2) TO CLOSE.

2. FOLD OVER LAST.



1. FOLD OVER FIRST.

2. FOLD OVER LAST.

★ TO CLOSE BOX, GLUE ON THE UNDERSIDE SIDE OF THE FLAP  
THEN FOLD OVER THE BACK SIDE OF THE BOX TO SHUT.